

KIKKOMAN

LuciPac II

Code 60375

Simple self-contained hygiene monitoring device for measuring total ATP



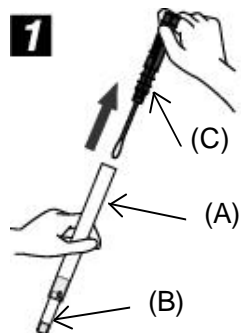
- Easy to use by anyone
(Simple self-contained swab device)
- Safe handling and easy disposal
(Glass free, PVC free)
- Will not stain objects being tested
(Uses only a dry cotton swab)



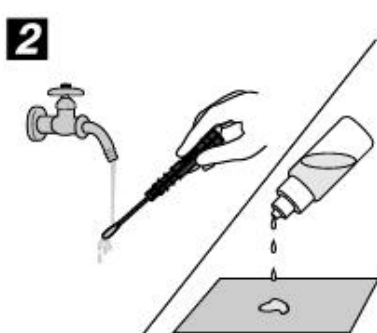
Portable luminometer, "Lumitester™ C-100" (sold separately)

Easy to Use by Anyone

LuciPac II consists of a cylindrical **main body (A)**, a **test tube (B)** containing luciferin and luciferase with a capsule containing ATP releasing reagent, and a dry **swab stick (C)**.



1 Pull the cotton swab stick (C) out of the main body (A).



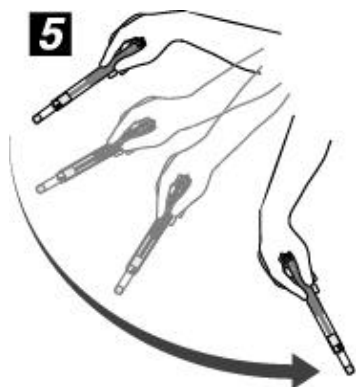
2 When the object to be tested is dry, moisten the swab (C) with tap water or wet the object with water.



3 Swab the object to be tested with the swab stick (C).



4 Put the swab stick (C) back into the main body (A) and push the stick to break the capsule in the test tube (B), permitting the liquid contained in the capsule to flow into the test tube (B).



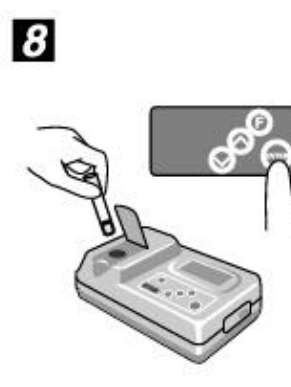
5 Shake the whole body of the *LuciPac II* several times so that any remaining liquid in the capsule falls into the test tube (B).



6 Gently shake the whole body of the *LuciPac II* so that the luminescent reagent is entirely dissolved.



7 Snap off the test tube (B) from the main body (A).



8 Insert the test tube (B) into the tube holder of a luminometer such as "Lumitester C-100". Press the "ENTER" key. Results are obtained within 10 seconds.

Product Name (Code)	Construction	Package	Storage
LuciPac II (60375)	<ul style="list-style-type: none"> • Dry swab • ATP releasing reagent • Luminescent reagent 	10 pieces / bag 10 bags / case	Store at 2-8°C in a refrigerator. Do not freeze.

Produced by

Kikkoman Corporation
 250 Noda, Noda-shi
 Chiba 278-8601, Japan

Distributed by

Seishin Corporation
 1-4-1 Kakigaracho, Nihonbashi
 Chuo-ku, Tokyo 103-0014, Japan
 Phone: +81 3 3669 2876
 Fax: +81 3 3669 1684